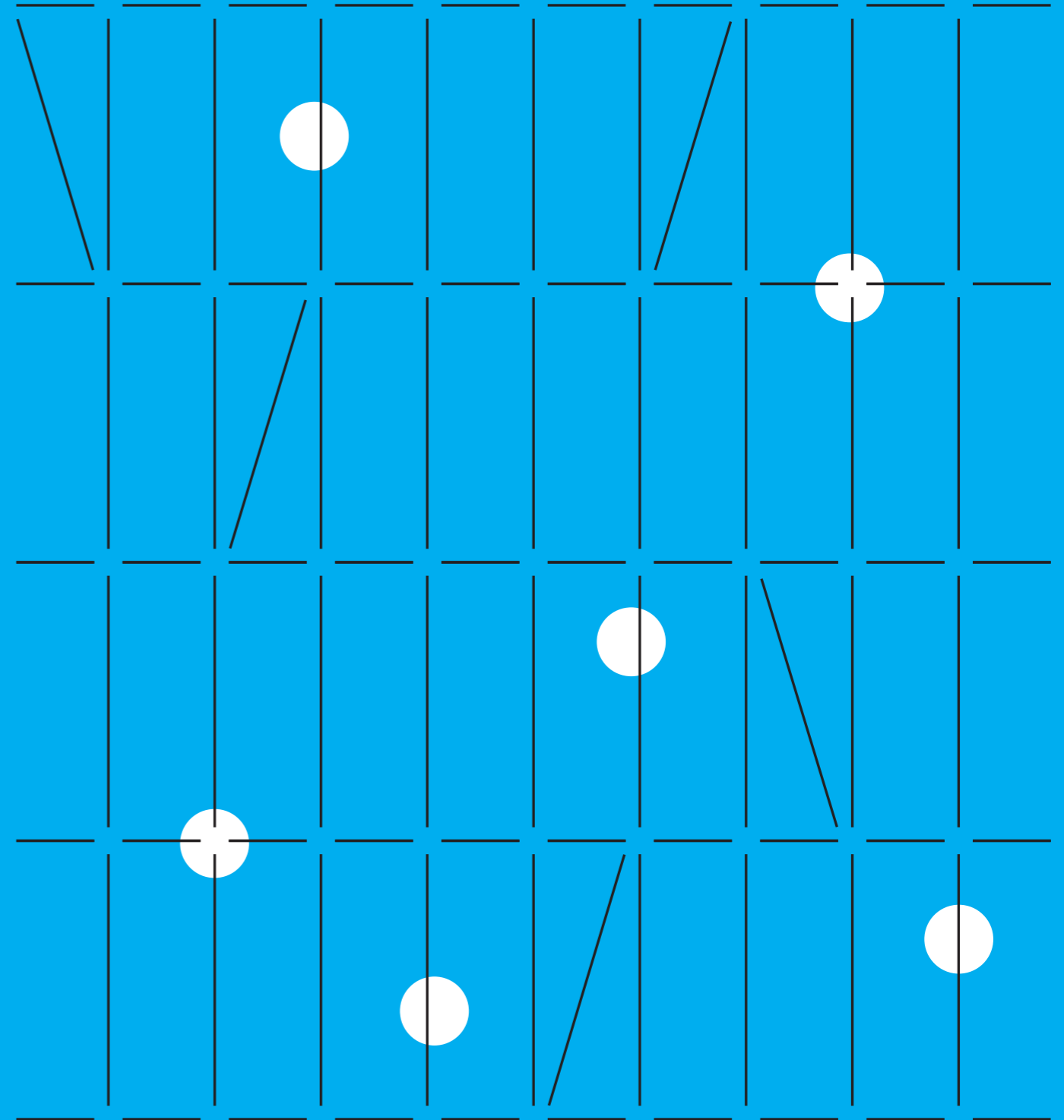


Global top-tier testing & research institute **Katri** >  
KATRI, creates a better future  
with services trusted by customers

**Katri** >



An internationally-recognized testing and certification institute in the fields of textile and fashion, automobiles, component materials, chemicals, biotechnology, and environment, KATRI is a leader in testing, inspection, certification, R&D, and consulting activities. Based on a foundation of expertise and high-level test analysis capabilities, KATRI supports clients by enhancing product quality and honing their technological edge. KATRI is committed to constantly re-inventing itself to provide a better tomorrow for clients.

Cover Story a grid imagery that evokes textile weaves and digital systems



[www.katri.re.kr](http://www.katri.re.kr)

**Better Future to You**

**Katri** >

**Better Future to You**

# Contents

## 1 With KATRI

A thank-you message from KATRI, KATRI's values, and KATRI's history.

04 Message

05 Values

06 KATRI's History

## 2 To You

An overview of KATRI's testing, certification, and inspection services and the domestic and international networks that make the process possible.

08 KATRI-Network

10 Business Services and Business Areas

11 Testing and Inspection Procedures

## 3 For Future

An overview of KATRI's commitment to a better tomorrow through ESG management and digital transformation.

12 ESG

14 DX

KATRI:  
We will repay  
our customer's trust  
for more than 50 years  
with a better tomorrow.



An internationally-recognized testing and certification institution in the fields of textile and fashion, automobiles, component materials, chemicals, biotechnology, and environment, KATRI is a leader in testing, inspection, certification, R&D, and consulting activities.

Based on a foundation of expertise and native digital integration, KATRI supports clients by enhancing product quality and honing their technological edge.

KATRI is committed to the values of trust and professionalism, to its partnership with businesses, and to the safety of consumers.

By utilizing big data and other promising technologies, KATRI seeks to pioneer new frontiers in the testing and certification industry, providing a better tomorrow for all through constant progress.

Thank you.

## MISSION

Better Future To You

## VISION

Global top-tier testing & research institute KATRI, creates a better future with services trusted by customers

## CORE VALUE

Knowledge  
Attitude of enthusiasm  
Trust  
Responsibility  
Innovation

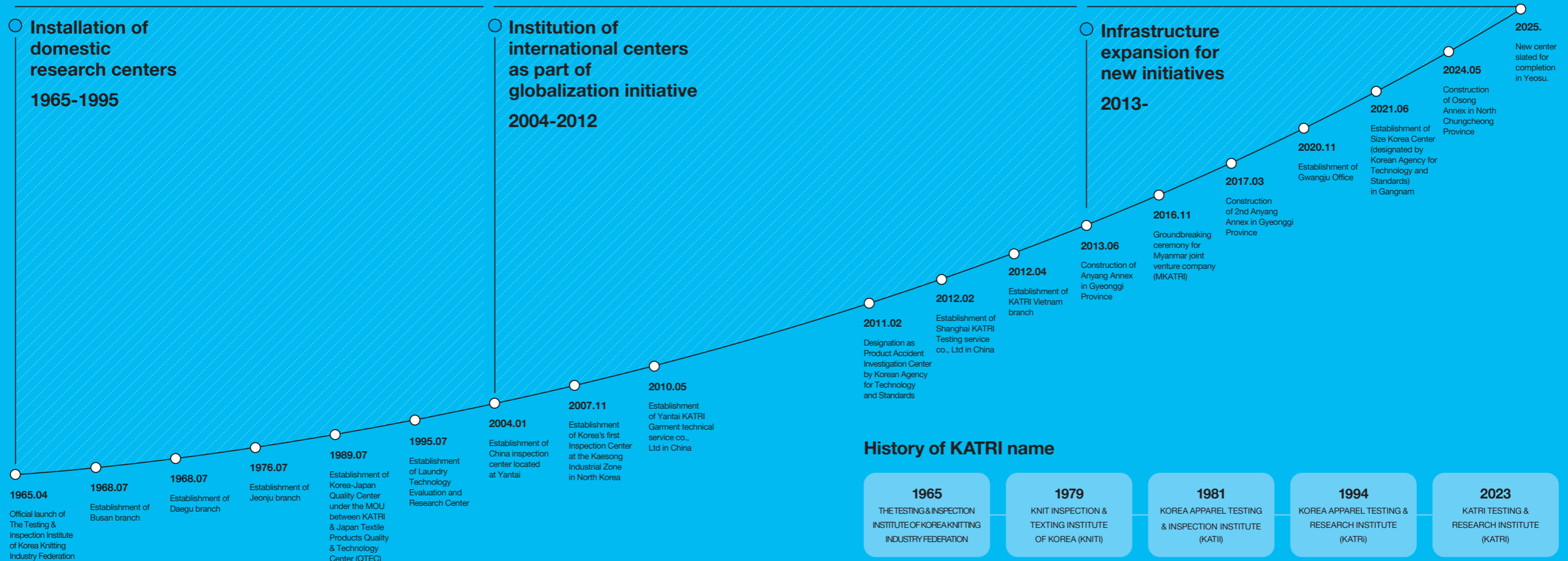
# KATRI's History

Founded in 1965 as the Testing & Inspection Institute of Korea Knitting Industry Federation, KATRI has played a critical part in consumer health and safety during the past half-century of development in Korea's textile industry. Providing testing, inspection, and certification services for consumer products used in all spheres of life, the organization had a crucial role in Korea's standardization industry, and upon the implementation of the KC Certification—which ensures that products adhere to official safety standards—KATRI has also dedicated itself to pre-and post-launch product safety management for lifestyle products and children's goods.

As Korea's first institute to be certified by the IDFB(the International Down and Feather Bureau) and IWTO(International Wool Textile Organisation) and as a protective apparel quality inspection institute, KATRI continues to take a leading role in the testing of down/feather and specific animal fibers and of protective apparel. KATRI's array of thermal-analysis equipment also made it the first Korean institute to be recognized by Airbus as an independent external testing institute for composite materials. By expanding beyond materials for apparel and into areas such as polymers and composite materials, KATRI now offers services to industries such as automobiles, component materials, household chemicals and appliances, bio-health, and environment. With the goal of enhancing domestic industries' international competitiveness, and assist Korean businesses in their venture into new markets, KATRI works not only with major business centers in Korea such as Seoul, Gyeonggi, central Korea, and the Yeongnam and Honam regions, but also with overseas areas with significant demand such as China and Vietnam to become an international testing and certification institute.

## Designation Status

<b>Ministry of Trade, Industry and Energy</b>	<ul style="list-style-type: none"> <li>• KOLAS Recognized Testing Institute</li> <li>• Industry Standard Development Partner Institute</li> </ul>	<ul style="list-style-type: none"> <li>• KOLAS Recognized Inspection Institute</li> <li>• Energy Efficiency Testing Institute</li> </ul>	<ul style="list-style-type: none"> <li>• KOLAS Recognized Product Certification Institute</li> </ul>
<b>Ministry of Food and Drug Safety</b>	<ul style="list-style-type: none"> <li>• Cosmetic Product Testing and Inspection Institute</li> </ul>	<ul style="list-style-type: none"> <li>• Hygienic Product Testing and Inspection Institute</li> </ul>	<ul style="list-style-type: none"> <li>• Quasi-drugs, etc. Testing and Inspection Institute</li> </ul>
<b>Ministry of Environment</b>	<ul style="list-style-type: none"> <li>• Consumer Chemical Products and Biocides Testing and Inspection Institute</li> </ul>	<ul style="list-style-type: none"> <li>• Environmental Measuring Instrument Integrity Inspection Institute</li> </ul>	<ul style="list-style-type: none"> <li>• Biodegradability Synthetic Resin Testing Institute</li> </ul>
<b>Public Procurement Service</b>	<ul style="list-style-type: none"> <li>• Public Procurement Service Designated Inspection Institute</li> </ul>		

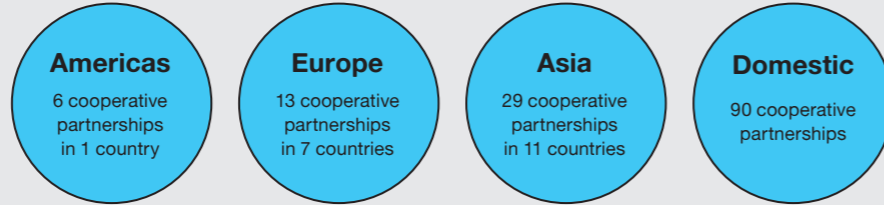


# KATRI Network

KATRI has a global network of MOUs with organizations in 19 countries across the Americas, Europe, and Asia, and carries on partnerships with prominent domestic government, industry and academic institutes.

In order to provide personalized services to individual industrial sites from nearby, KATRI operates offices for five major regions in Korea (Seoul, Gyeonggi, North Chungcheong Province, Yeongnam, Honam) and Asian nations (China, Vietnam, Myanmar).

## Domestic and international partnerships



# KATRI Network

	Location (on map)	Area	Specialization (+name of international branch)
<b>Domestic</b>	Seoul	Dongdaemun Gangnam	Textile/Fashion
	Gyeonggi Province	Anyang	Mobility, Consumer Chemical Goods, Biotechnology, Environment
	North Chungcheong Province	Osong	
	Yeongnam	Busan	Textile/Fashion, Mobility
		Ulsan	
Daegu			
Honam	Jeonju	Environment R&D	
	Yeosu		
<b>International</b>	China	Shanghai	KATRI Shanghai Testing service Co., Ltd
	Vietnam	Ho Chi Minh	KATRI Vietnam Co., Ltd Ho Chi Minh Inc.
		Hanoi	KATRI Vietnam Co., Ltd. Hanoi Branch
Myanmar	Yangon	MKATRI (Myanmar & KATRI Joint Venture Company)	

## Global Network

● Cooperating partners ● KATRI branches



## Domestic Network

● KATRI branches








## Business Services

With specialized professionals and the latest cutting-edge technology, KATRI enhances product quality through its testing, inspection, certification, consulting, and R&D services.

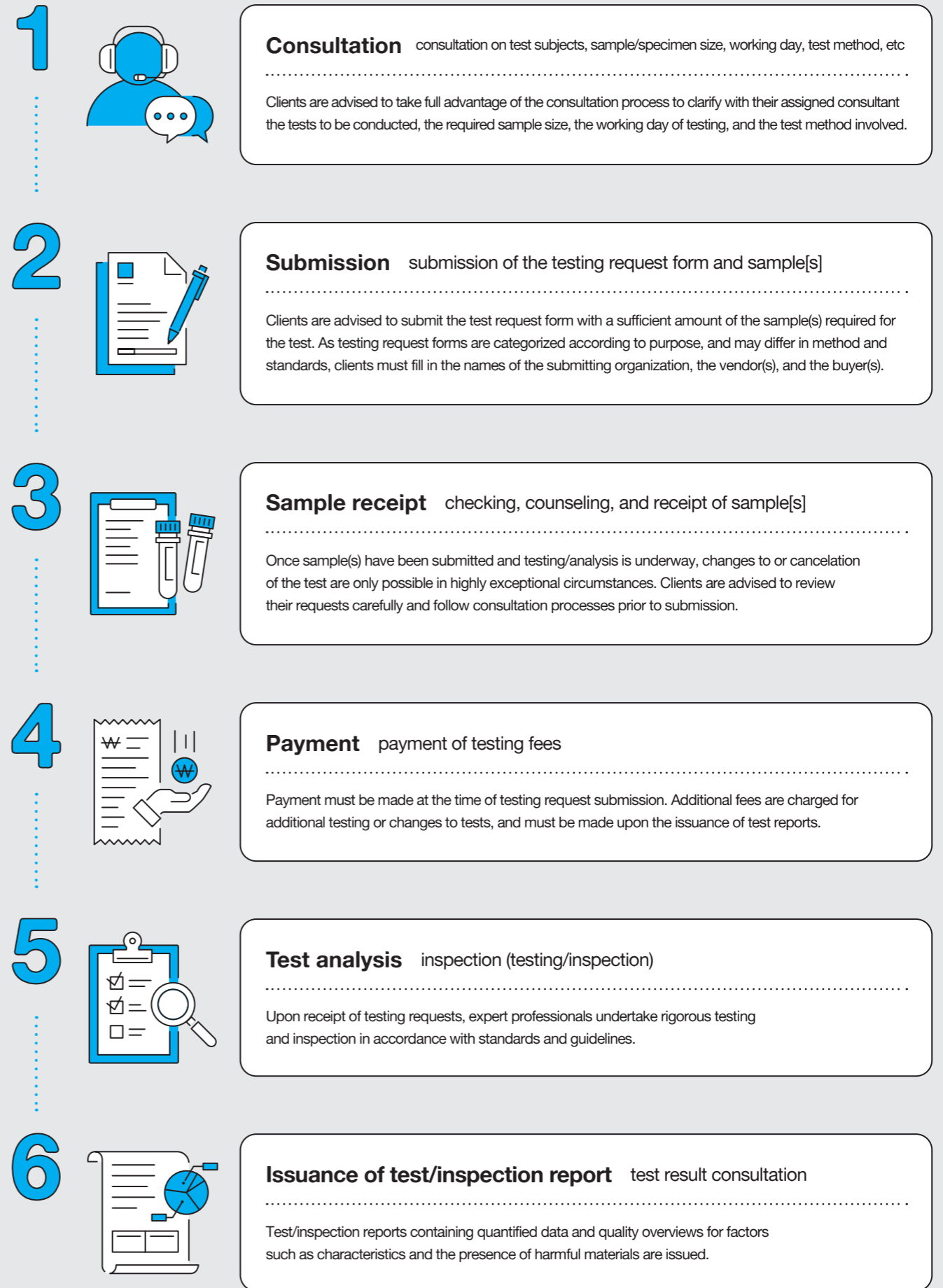
1	<b>Testing</b>	KATRI tests products and materials in standardized testing processes to calculate characteristic values and produce results.
2	<b>Inspection</b>	KATRI passes or fails products and/or facilities on a basis of professional examination of test results.
3	<b>Certification</b>	KATRI, as a public institution, determines whether products fulfill official standards before certifying them.
4	<b>Consulting</b>	KATRI provides personalized consulting services for companies in a wide range of areas for every stage of the product lifecycle, such as development, quality assurance, and accident investigation.
5	<b>Research &amp; Development</b>	KATRI works in partnership with the public and private sectors in a range of research initiatives such as standardization, enhancement of public trust, and development of new evaluation technologies.

## Business Areas

KATRI continues to expand its base from textile and material analysis into mobility, consumer chemical goods, biotechnology, and environment.

Fashion & Textile	Mobility & Materials	Living & Life Style	Health & Beauty	Environment
				
Fashion/apparel/etc.	Automotive interior/ exterior parts	Household chemical products	Retail cosmetics	Atmospheric quality
Children's products	Electric components	Biocides	Natural cosmetics	Indoor air quality
Military/public sector uniforms	Polymers/plastics	Laundry appliances	Hygiene products	Biodegradation
Protective apparel	Rubber/metals	Cleaning products	Quasi-drugs	Biomass
Furniture/home and living	Compound and composite materials		Microorganisms	
Textiles/subsidiary materials	Construction materials			

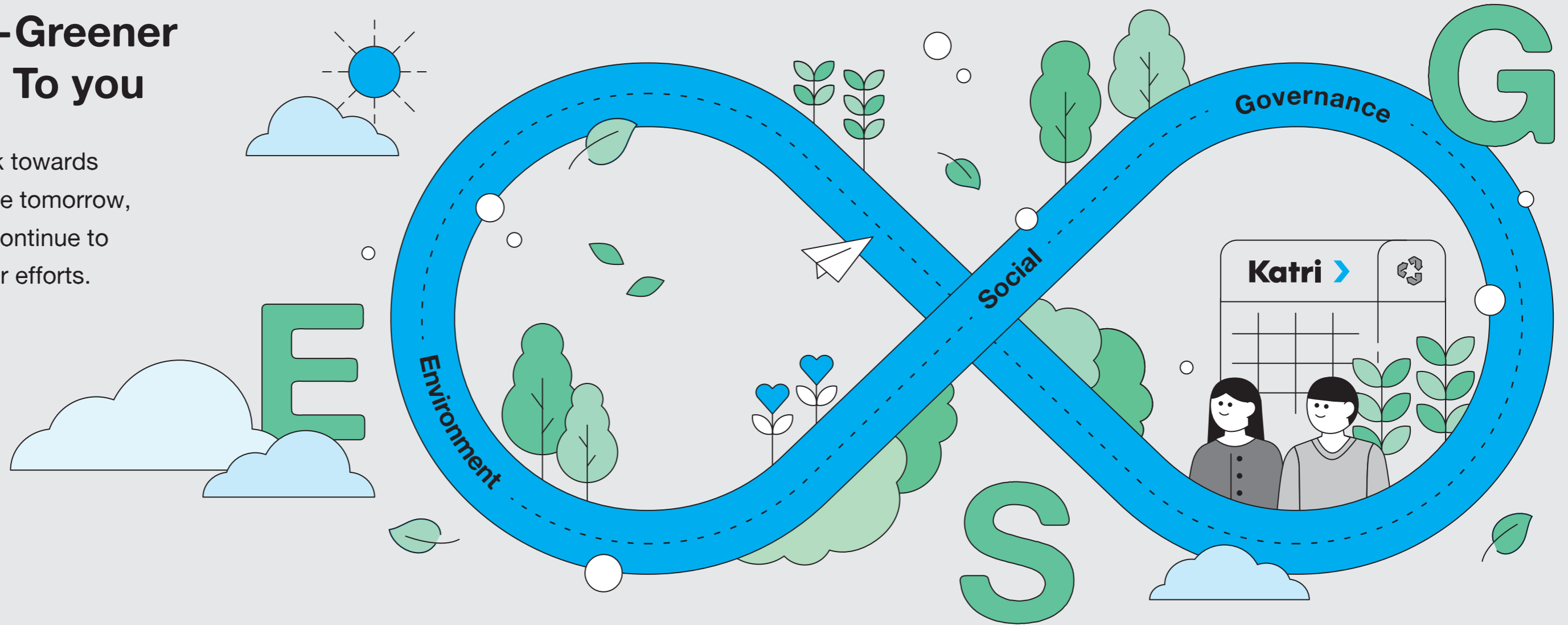
## Testing and Inspection Procedures



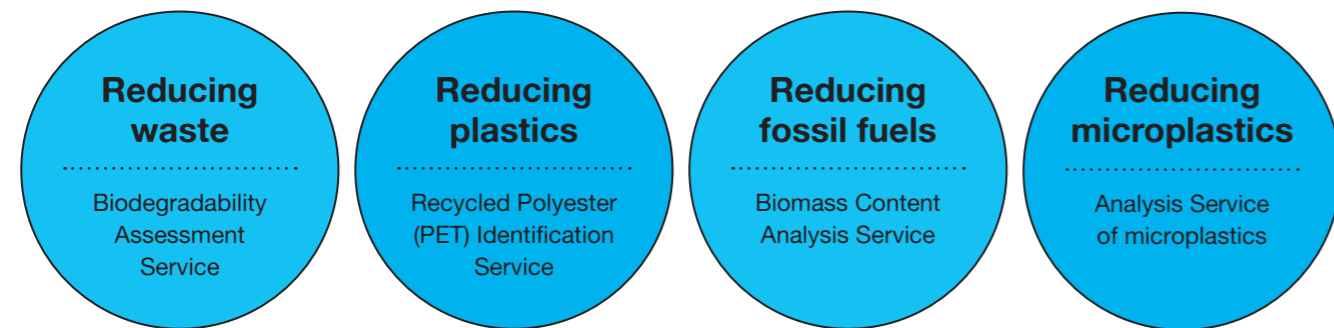


# Better-Greener Future To you

As you work towards a sustainable tomorrow, KATRI will continue to support your efforts.



## Environment-Conscious Service



CO<sub>2</sub> emissions from the breakdown of compounds by microorganisms, and the oxygen consumption of the process are analyzed according to international standards in order to foster a healthier resource-cycling ecosystem.

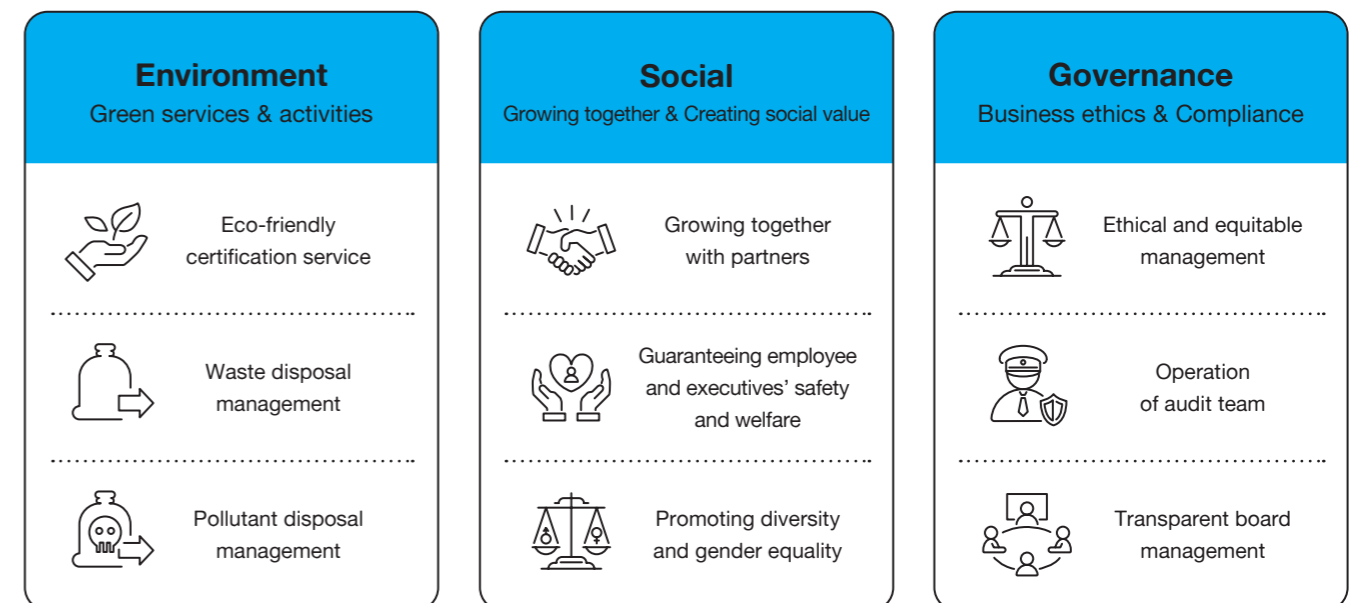
A KATRI-exclusive service, upcycled products are checked to see if they utilize recycled PET bottles to encourage businesses to manufacture greener products.

As the first testing and certification institute in Korea to implement an accelerator mass spectrometer, KATRI analyzes nature-based materials and continues to expand this process into a range of industries.

By analyzing the release of microplastics generated during the washing process, KATRI supports the development of eco-products for clothing and laundry appliances.

## ESG

Environmental and social responsibility, as well as the value of transparent management remain KATRI's core values for a sustainable future for both society and the earth.



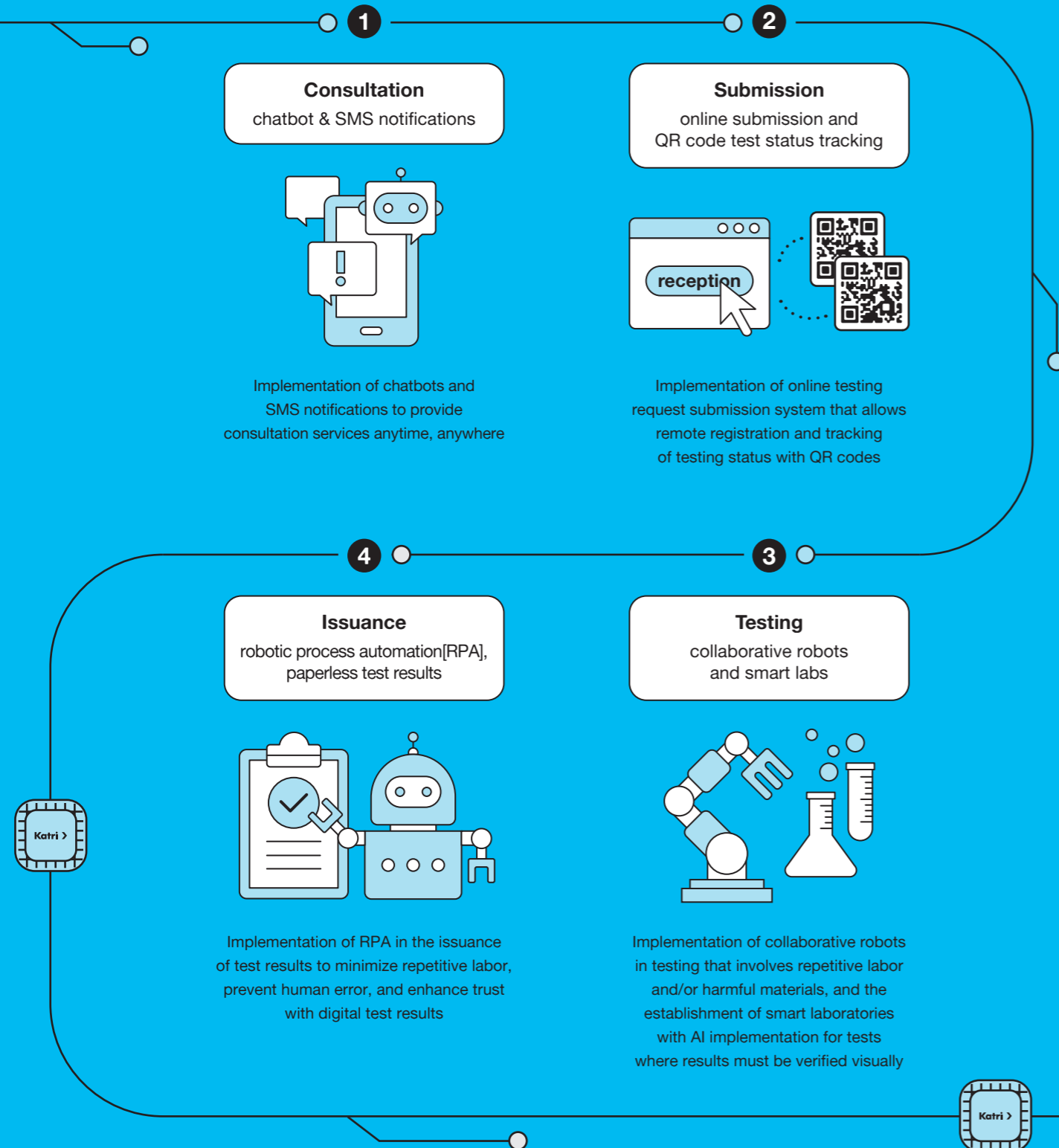


# DX Digital Transformation

As a leader in industrial big data and digital transformation, KATRI develops new testing and certification infrastructure to support businesses and consumers.

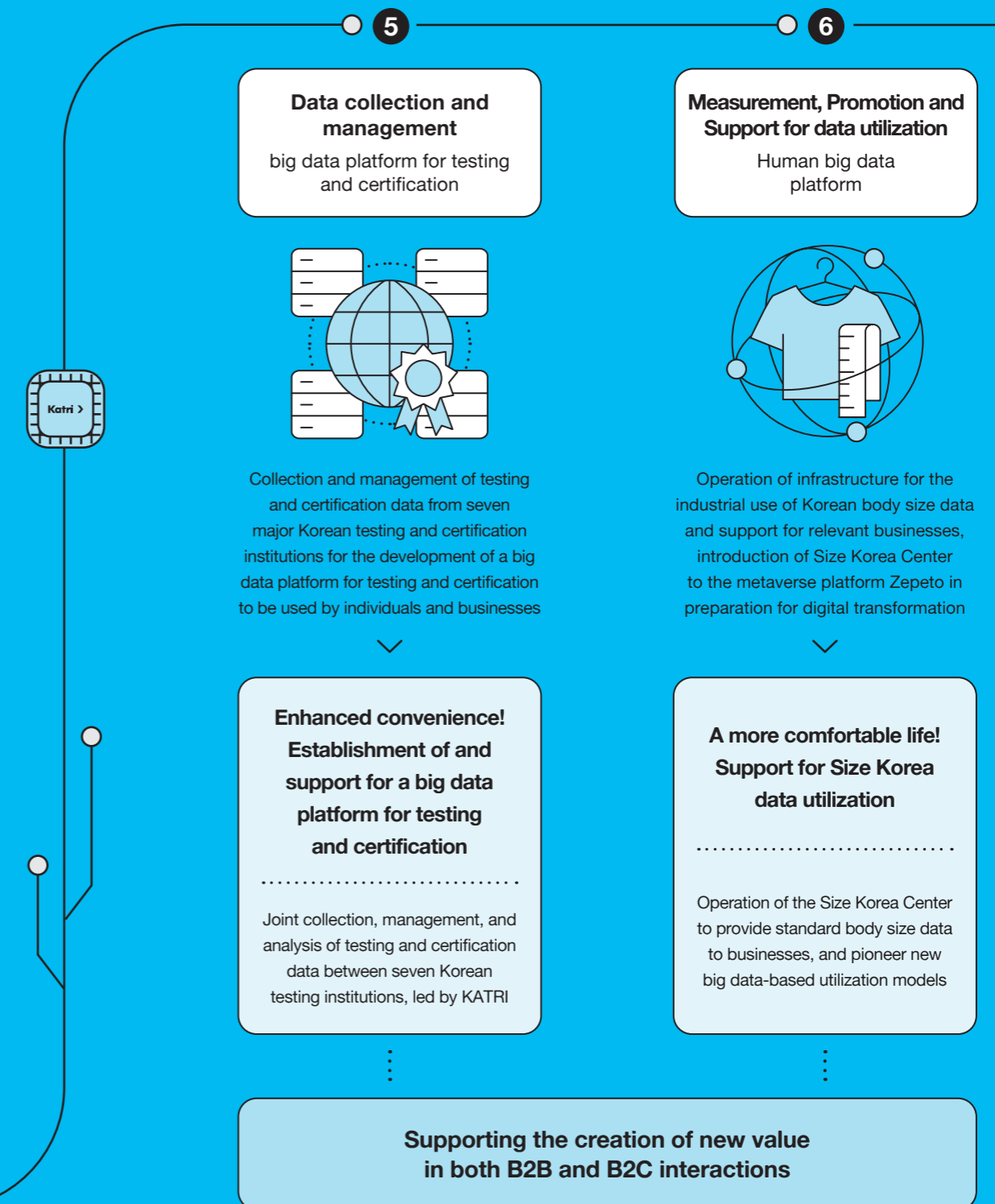
## Digital transformation services utilizing promising IT technologies

KATRI is making digital transformation a reality in all stages, from consultation to submission, testing, and issuance of test reports.



## Public-sector research related to data

KATRI supports the digital transformation of Korean society and industry as the Korean government's designated contractor for initiatives such as "Testing and Certification Platform Establishment and Utilization Support" and "Measurement, Promotion and Support for Size Korea Data Utilization."





**Publish** KATRI

**Address** 51, Wangsan-ro, Dongdaemun-gu, Seoul, Korea

**TEL** +82-2-3668-3000

**FAX** +82-2-3668-2900

**Editing & Design** SUNNYISLAND

**Printing** GMADE C&P

**Published Month** 2022. 07

Copyright© 2022 KATRI. All rights reserved.